

Slipstreaming Windows XP Service Pack 2 and Create Bootable CD

Slipstreaming a [Service Pack](#), is the process to integrate the Service Pack into the installation so that with every new installation the Operating System and Service Pack are installed at the same time.

Slipstreaming is usually done on network shares on corporate systems. But with the advent of [CD](#) burners, it does actually make some sense for the home user or small business user to do the same.

Microsoft added the ability to Slipstream a Service Pack to [Windows](#) 2000 and [Windows XP](#). It not only has the advantage that when you (re)install your OS, you don't have to apply the Service Pack later, also if you update any Windows component later, you'll be sure that you get the correct installation files if Windows needs any.

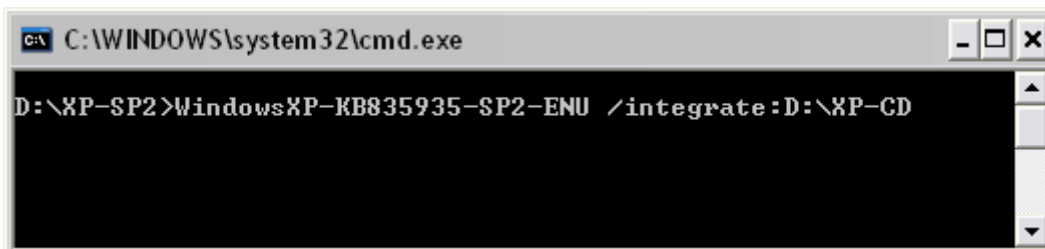
Slipstream Windows [XP Service Pack 2](#)

Download the (full) "Network Install" of the Service Pack ([English version](#) [266 MB]), and save it to a directory (folder) on your hard drive (in my case **D:\XP-SP2**). Other languages can be downloaded from the [Microsoft Download](#) Web site.

Note: do not use spaces in the folder name!

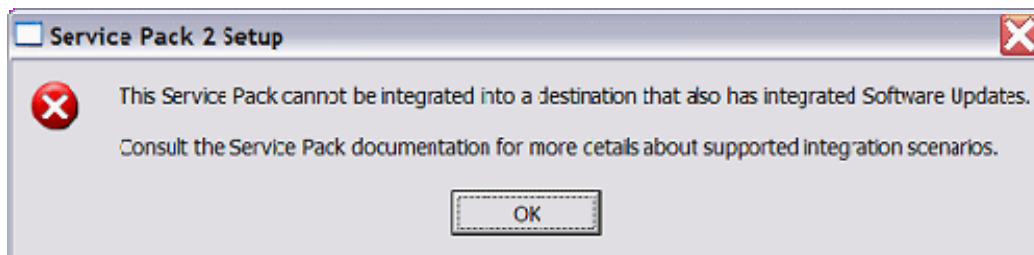
Next copy your Windows [XP](#) CD to your hard drive. Just create a folder (I used **\XP-CD**), and copy all the contents of your Windows XP CD in that folder.

Next, open a **Command Prompt** (**Start > Run > cmd**), and go to the folder where you downloaded SP2 (**cd \foldername**). Type the command: *servicepack filename /integrate:drive/path*. In my example the command is **WindowsXP-KB835935-SP2-ENU /integrate:D:\XP-CD**.



```
C:\WINDOWS\system32\cmd.exe
D:\XP-SP2>WindowsXP-KB835935-SP2-ENU /integrate:D:\XP-CD
```

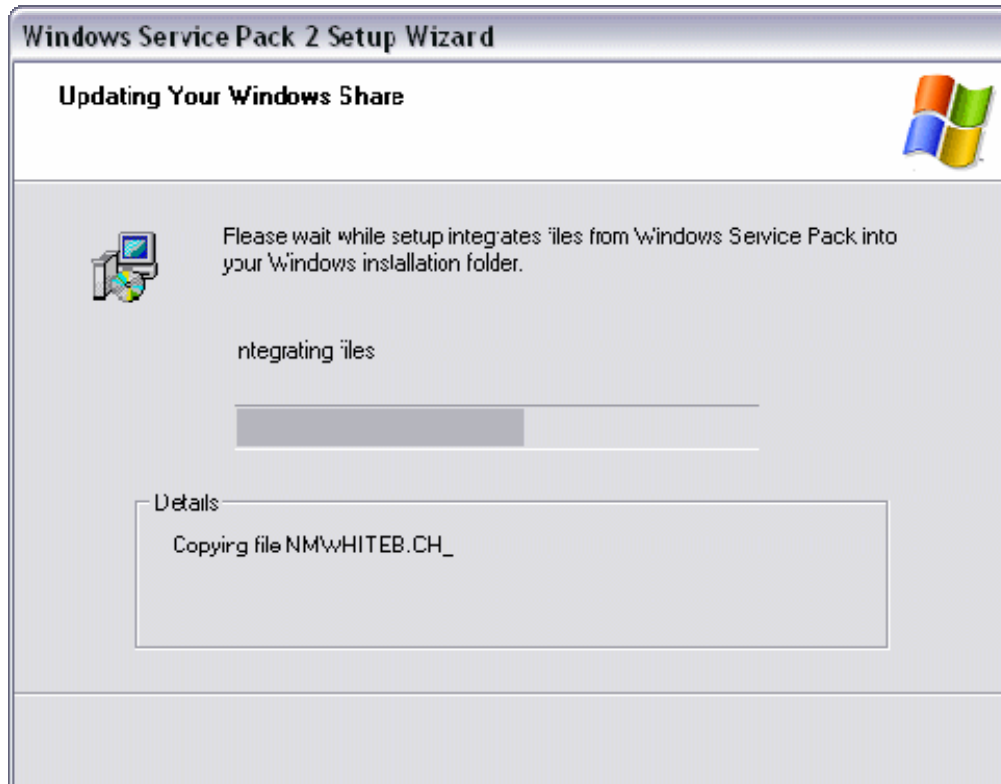
If you get the error:



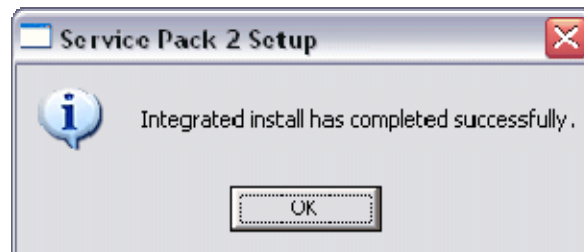
This is caused by the fact that your Windows XP CD contains updates that will be automatically installed when you run setup. This type of CD's will usually be from larger OEM suppliers (like Dell, HP, or others).

You cannot use this type of CD to create a slipstreamed SP2 install.

First, the files will be extracted, and next they will be integrated in your Windows XP files:



When ready, you should get a confirmation. [Windows XP Service Pack 2](#) has now been Slipstreamed into your original Windows XP files.

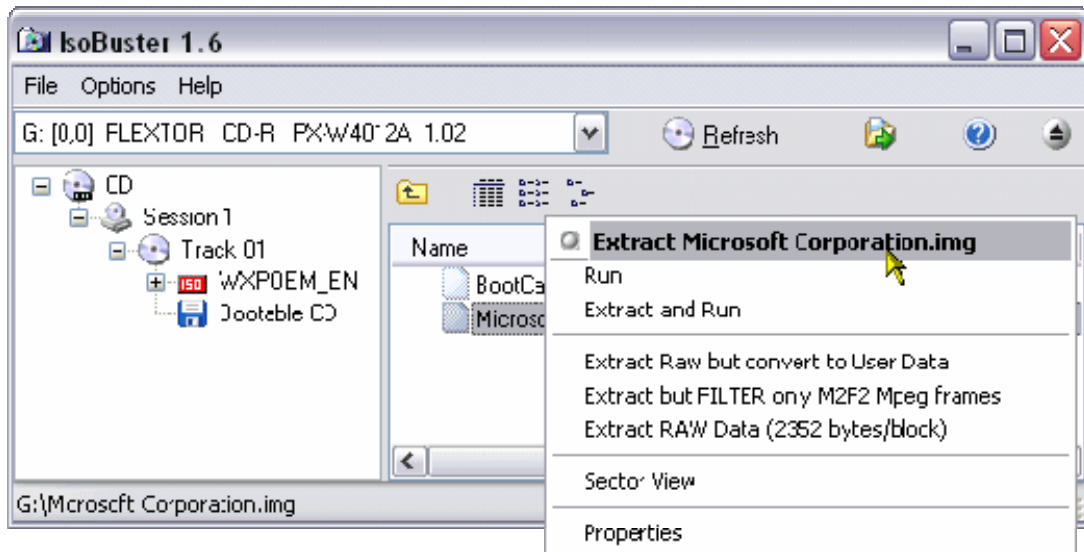


Creating a Bootable CD

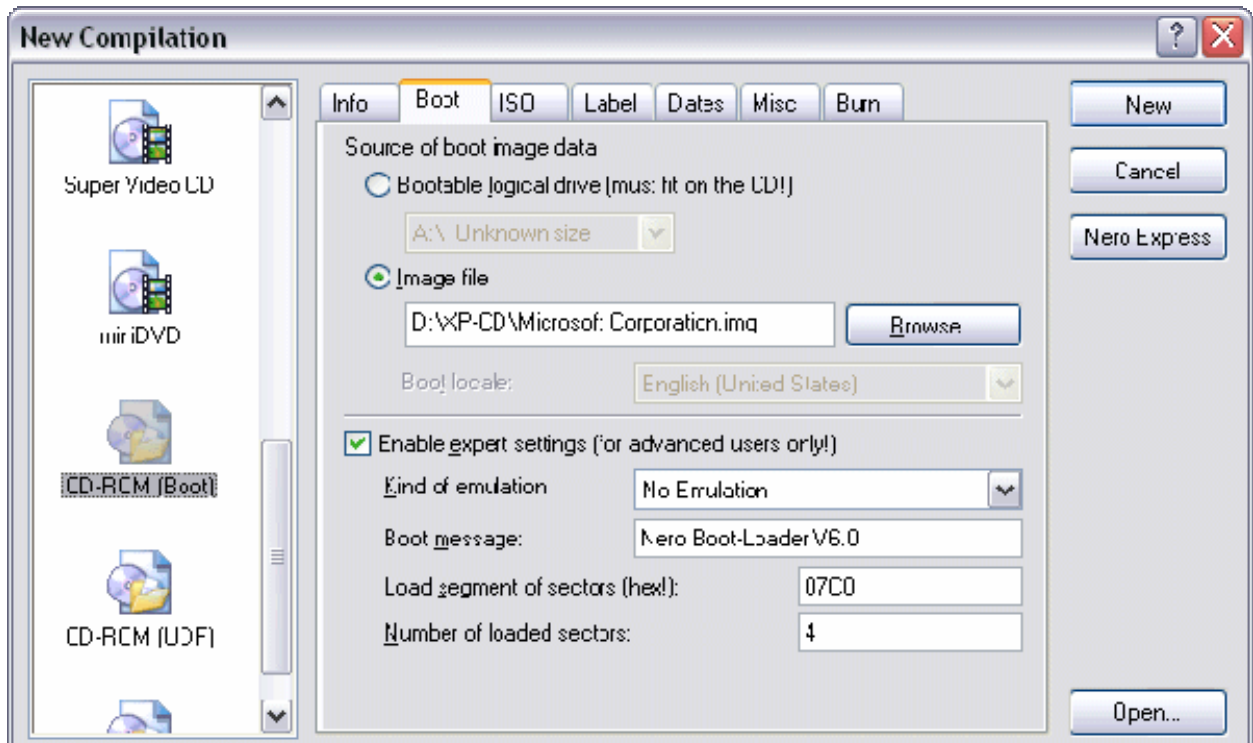
For this part I used [IsoBuster](#) and [Nero Burning ROM 6](#) (make sure you have the latest version, but at least 5.5.9.0).

After you install IsoBuster, you can choose to use only the product's free functionality for what we want to do, IsoBuster will look like the image below (you need to have your original Windows XP CD in the CD-ROM drive).

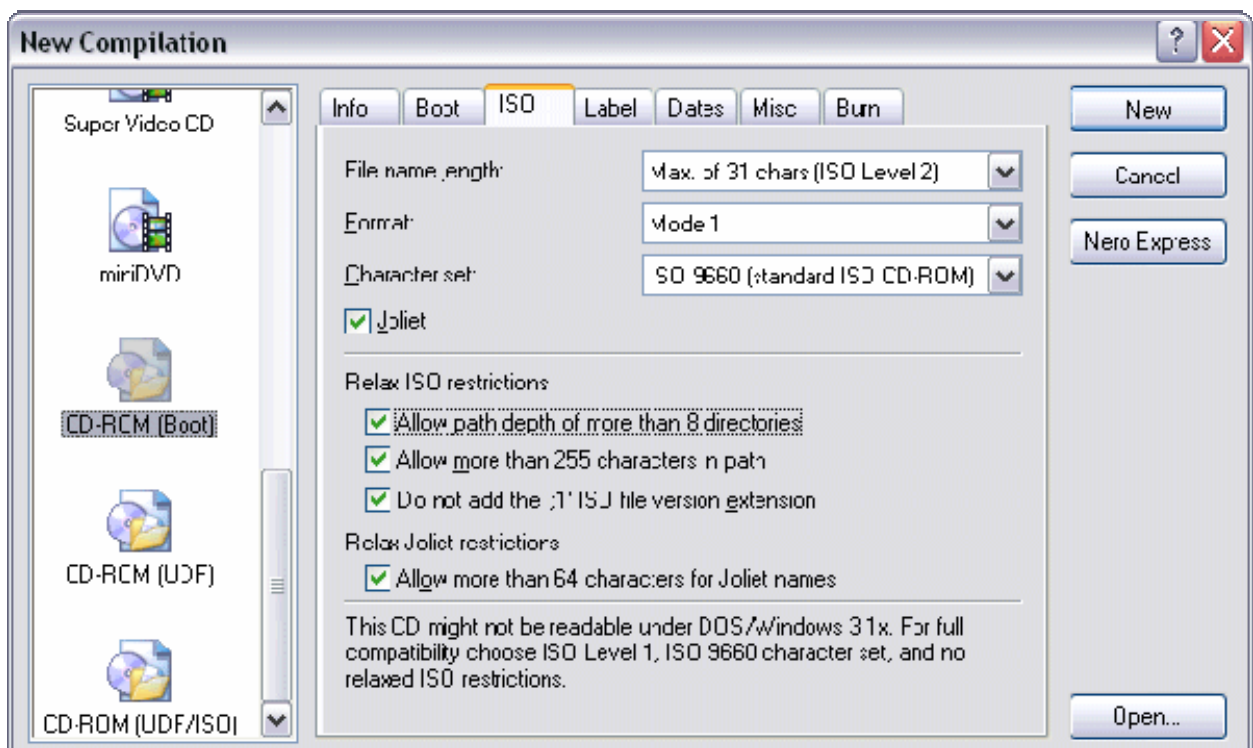
Start to extract the boot loader from the original Windows XP CD. Using IsoBuster, select the "folder" **Bootable CD**, and right-click **Microsoft Corporation.img**. From the menu choose **Extract Microsoft Corporation.img**, and extract it to the folder on your hard drive where you have your Windows XP files (**D:\XP-CD** in my case).



Next, start **Nero Burning ROM**, and choose **CD-ROM (Boot)** in the **New Compilation** window. On the **Boot** tab, select **Image file** under **Source of boot image data**, and browse to the location of the **Microsoft Corporation.img** file. Also enable **Expert Settings**, choosing **No Emulation**, and changing the **Number of loaded sectors** to **4** (otherwise it won't boot!)



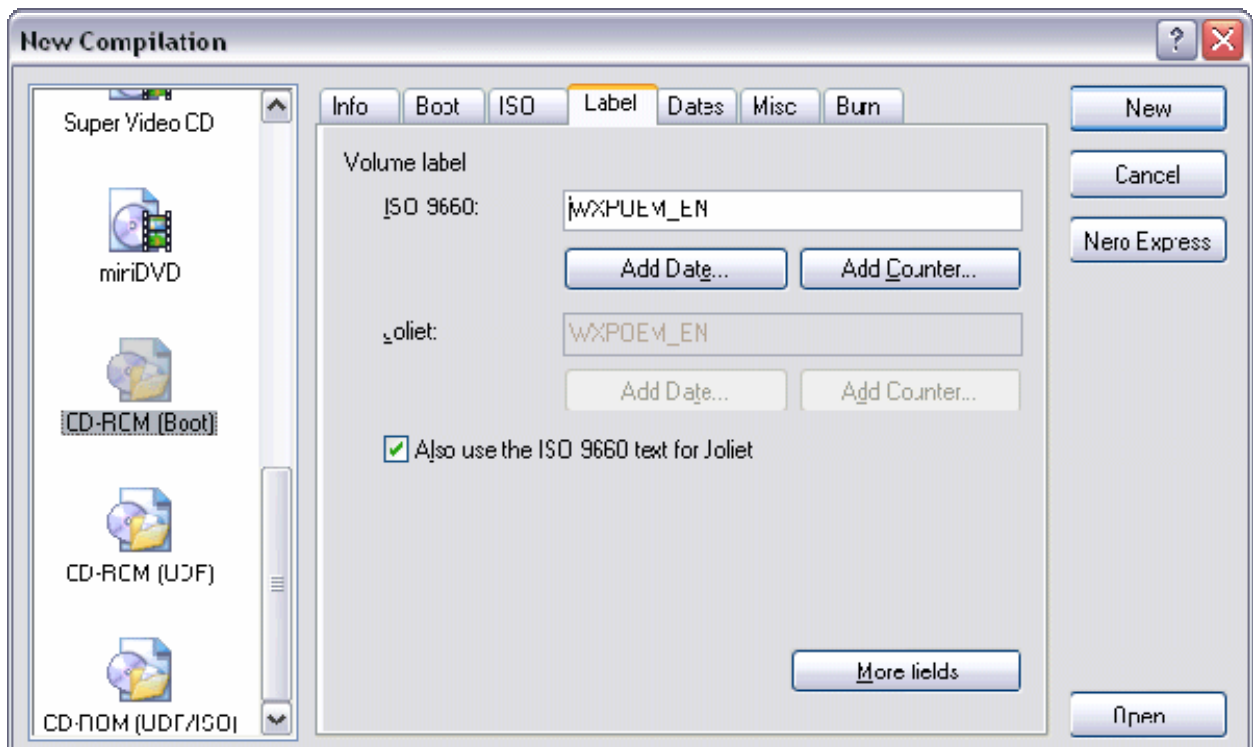
The **ISO** tab should be configured correctly as shown below:



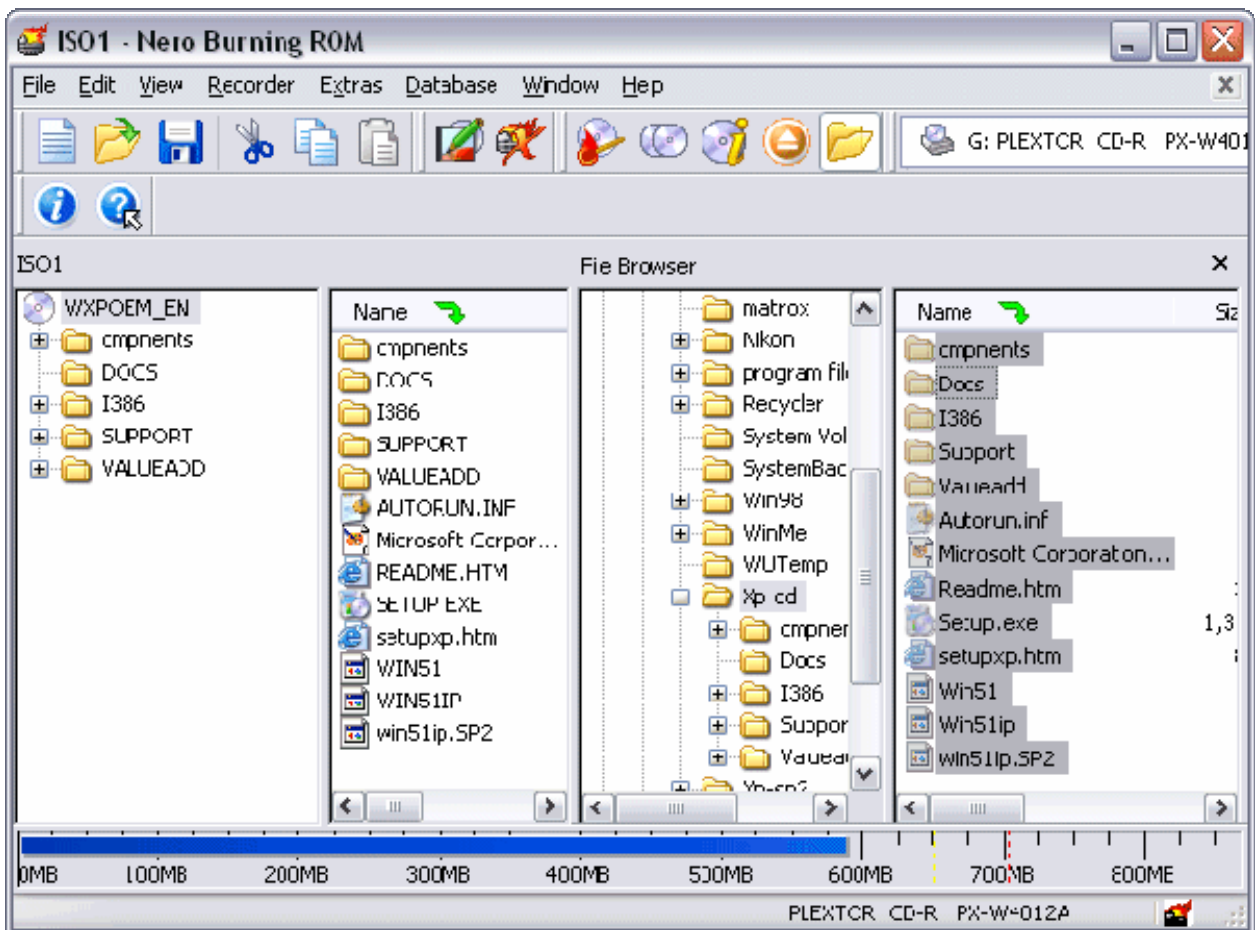
If you have an older version of Nero you won't have the option *Do Not Add ";1"* ISO file version extension under *Relax ISO Restrictions*. You won't be able to boot your new CD, so update Nero!

You can configure the **Label** tab to your liking, I would however recommend that you keep the **Volume Label** the same as on your original Windows XP CD. Here are some (English) Labels:

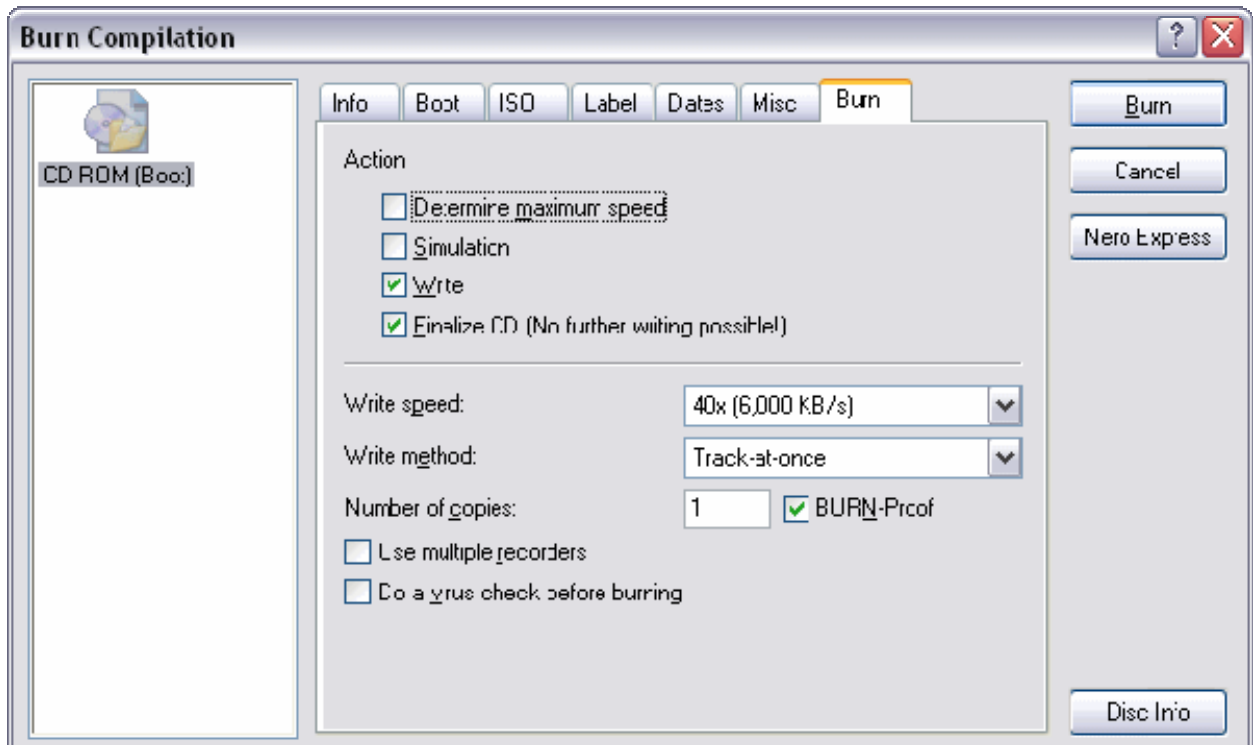
- Windows XP Professional: WXPCCP_EN
- Windows XP Home: WXHCCP_EN
- Windows XP Professional OEM: WXPOEM_EN
- Windows XP Home OEM: WXHOEM_EN



Next press **New**, and from the **File Browser** window, select the files and folders from your slipstreamed location (in my case **D:\XP-CD**). Now drag & drop the selected files in the ISO1 window.



Next, burn your new CD.



You now have a Bootable, Slipstreamed Windows XP Service Pack 2 CD!

[Give your comments on this article.](#)

[E-mail This Page](#)



Previous Page



Next Page

Last Updated: August 27, 2004